

# City & Guilds Foundation Programme - Knitting

## CGF.M2.L01.T: Colourwork – Fair Isle Stranding and weaving in – Tasks



### Task One

Select three different coloured yarns, choosing one pastel or neutral colour, one strong colour and a contrasting colour.

For example:

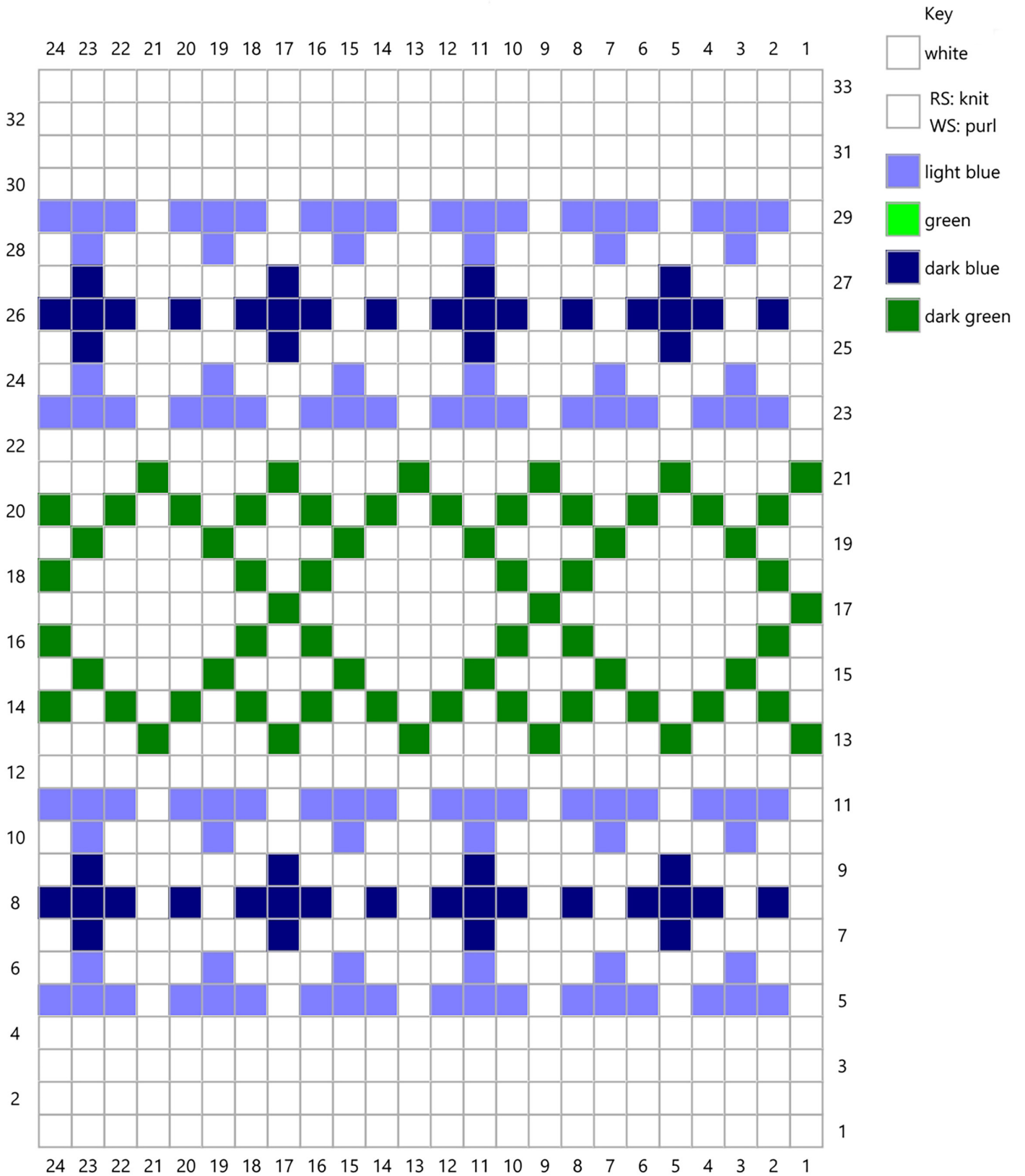
- A pale blue, an indigo blue and a yellow
- White, burgundy and orange
- Cream, chestnut brown and pink

Using the chart overleaf, decide which of your colours will be colour A, B and C.

Make a note of this on the chart or in your notebook.

Using a pair of 4mm (old UK size 8, USA size 6) needles, cast on 24 stitches.

Knit a sample in your choice of colours, following the chart overleaf. Use stranding and weaving in as appropriate, following the guidance in the tutorials.



© 2021 Debbie Tomkies  
 All rights reserved. Not to be copied or  
 distributed without written permission.