

# City & Guilds Foundation Programme - Knitting

## CGF.M2.L10 & L11T: Line – Cables – Tasks



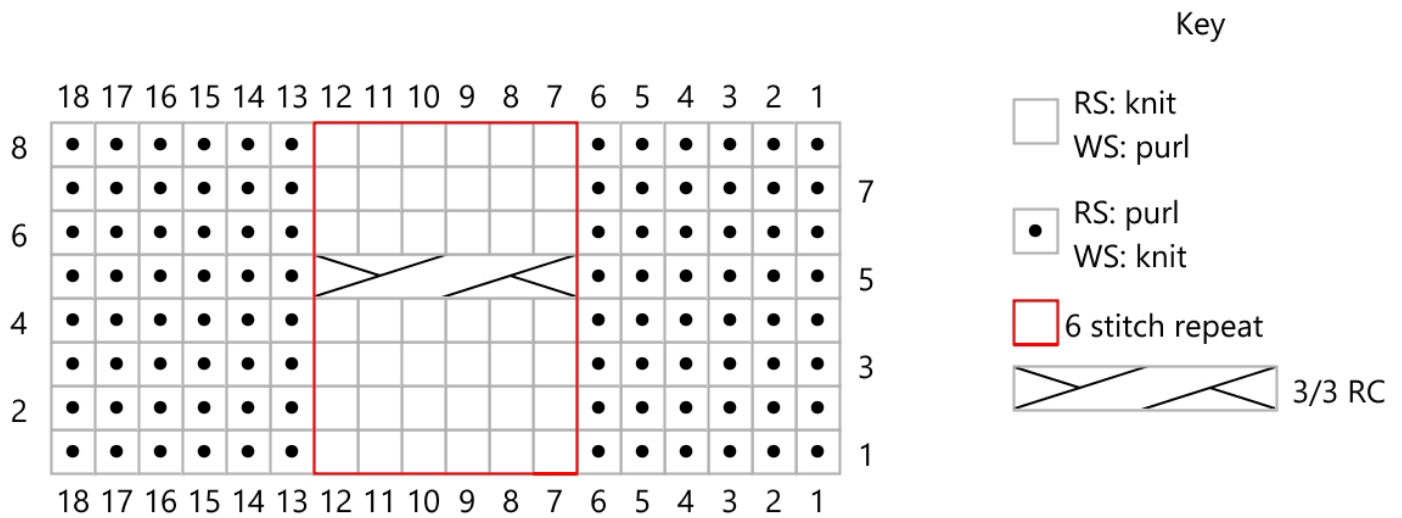
### Objective

In these tasks you will be exploring how cables can be used to create line.

### Task One

#### Single cable – twist to the right

In this sample you will be making a cable with a twist to the right. The chart shows the cable panel and you will be adding 6 stitches on either side (see pattern instructions). The edge stitches are worked in reverse stocking (stockinette) stitch, so purled on the RS row and knitted on the WS row.



Using a pair of 4mm (old UK size 8, USA size 6) needles, cast on 18 sts.

Row 1 (RS): P6, k6, p6.

Row 2: K6, p6, k6.

Rows 3-4: Repeat rows 1-2.

Row 5: P6, 3/3 RC, p6.

Row 6: As row 2.

Row 7: As row 1.

Row 8: As row 2.

Repeat rows 1-8 twice.

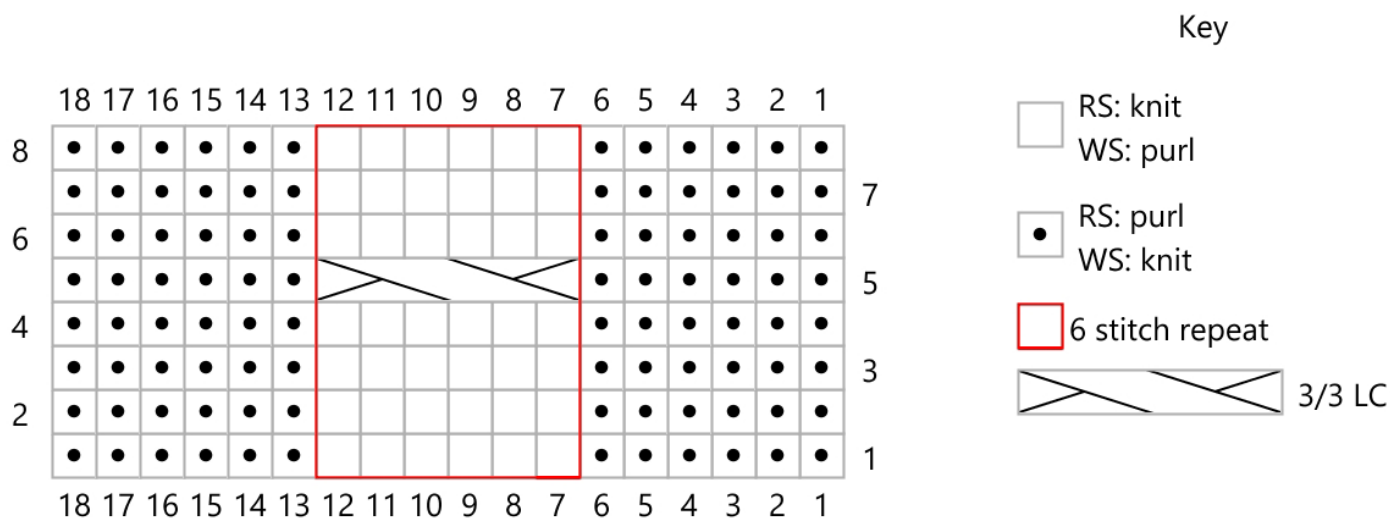
Cast off.

Finish your sample by weaving in all ends, blocking and pressing.

## Task Two

### Single cable – twist to the left

In this sample you will be making a cable with a twist to the left. Again, the chart shows the cable panel and you will be adding 6 stitches on either side (see pattern instructions). The edge stitches are worked in reverse stocking (stockinette) stitch, so purled on the RS row and knitted on the WS row.



Using a pair of 4mm (old UK size 8, USA size 6) needles, cast on 18 sts.

Row 1 (RS): P6, k6, p6.

Row 2: K6, p6, k6.

Rows 3-4: Repeat rows 1-2.

Row 5: P6, 3/3 LC, p6.

Row 6: As row 2.

Row 7: As row 1.

Row 8: As row 2.

Repeat rows 1-8 twice.

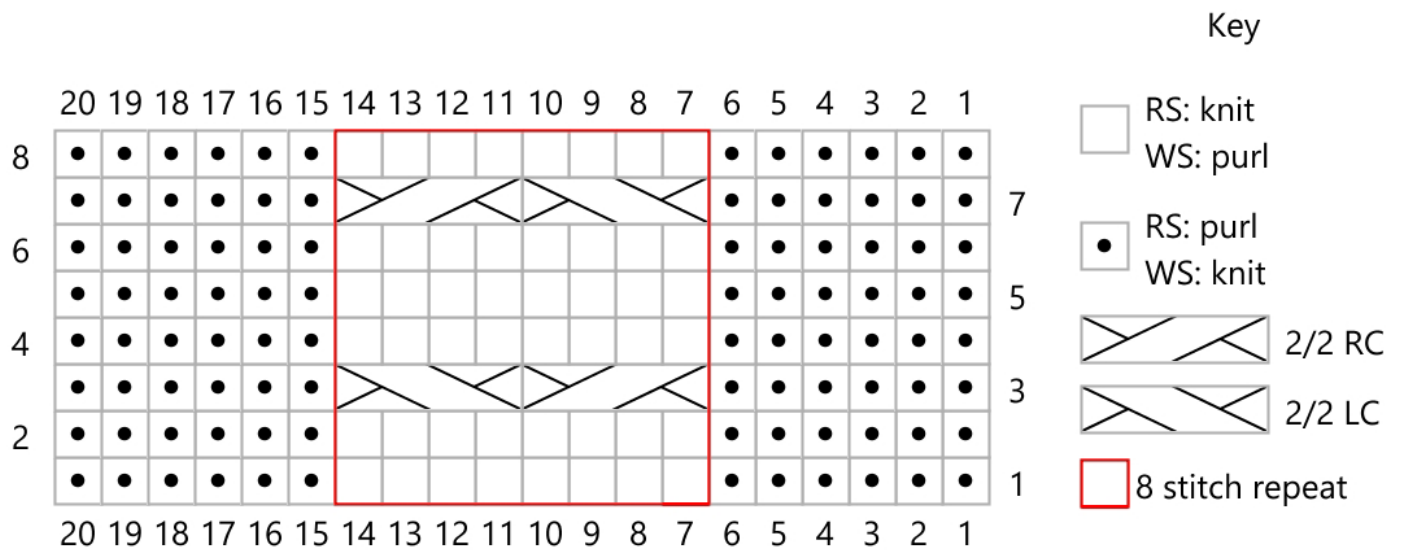
Cast off.

Finish your sample by weaving in all ends, blocking and pressing.

## Task Three

### *Honeycomb cable*

This richly textured fabric is not as complex as it appears. It is essentially a series of narrow cable panels repeated across the row without background stitches between the repeats (for this sample there is an added reverse stocking (stockinette) stitch border to make the cable stand out). This fabric can be heavy when worked over a large area so allow for this when planning any design.



Using a pair of 4mm (old UK size 8, USA size 6) needles, cast on 28 sts.

Row 1: P6, k to last 6 sts, p to end.

Row 2: K6, P to last 6 sts, k to end.

Row 3: P6, \*2/2 RC, 2/2 LC, rep from \* to last 6 sts, p6.

Row 4: As row 2.

Row 5: As row 1.

Row 6: As row 2.

Row 7: P6, \*2/2 LC, 2/2 RC, rep from \* to last 6 sts, p6.

Row 8: As row 2.

Repeat rows 1-8 twice.

Cast off.

Finish your sample by weaving in all ends, blocking and pressing.

## Task Four

### ***Produce your own cable***

For this task you will need a piece of graph paper and a pencil/pen. Create a cable based on your own design. It should be at least 30 stitches wide and 30 rows long (you may vary the stitch and row numbers to suit your pattern repeat). You may like to refer to a stitch dictionary or you may make up your own cable from scratch. You can work either from the chart or write up the instructions if you prefer.

Using a pair of 4mm (old UK size 8, USA size 6) needles, knit your sample from your chart.

Finish your sample by weaving in all ends, blocking and pressing.

## Task Five

### ***Reflect and record***

Compare the samples you have made and make notes on their appearance. What do you notice? How might your cables be used? Can you see any challenges or limitations in using cables?

## Stitch Glossary

K: Knit

P: Purl

3/3 LC: Slip 3 stitches to cable needle and hold at the front of the work; k3; k3 from cable needle.

3/3 RC: Slip 3 stitches to cable needle and hold at the back of the work; k3; k3 from cable needle.

2/2 LC: Slip 2 stitches to cable needle and hold in front; k2; k2 from cable needle.

2/2 RC: Slip 2 stitches to cable needle and hold in back; k2; k2 from cable needle.

Rep: Repeat

© 2021 Debbie Tomkies  
All rights reserved. Not to be copied or  
distributed without written permission.